

# 烽月

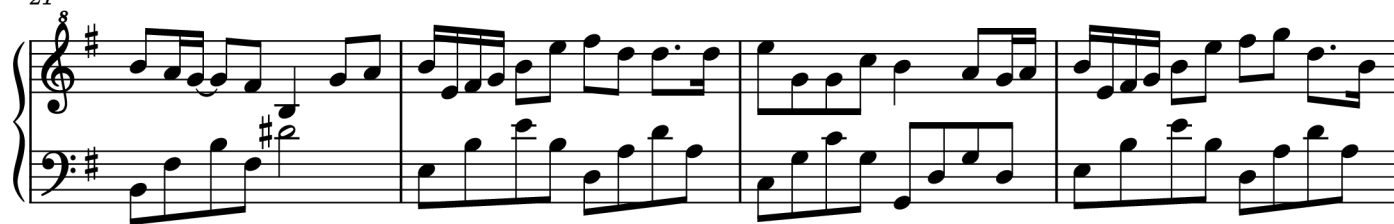
演唱：刘宇宁  
作曲：姜海威/芦全瑞

♩ = 57

The piano score for "Feng Yue" is written in 4/4 time with a key signature of one sharp (F#). The tempo is marked as quarter note = 57. The score is divided into five systems, each containing a treble and bass staff. The first system starts with a treble staff rest and a bass staff melody. The second system (measures 5-8) features a treble staff melody with a fermata and a bass staff accompaniment. The third system (measures 9-12) continues the treble staff melody with a fermata and the bass staff accompaniment. The fourth system (measures 13-16) shows the treble staff melody with a fermata and the bass staff accompaniment. The fifth system (measures 17-20) concludes the piece with a treble staff melody and a bass staff accompaniment.

2

21



25



29



33



37



41



45



49



53



57



61



# ☐☐ (Phong Nguyệt), file .PDF

## \* Credit

- Name: ☐☐ (Phong Nguyệt). *Yuèguang sì shenhai wú yán què gé àn*
- Author/Composer: ☐☐☐
- Link: <https://truongca.com/nhac/28781-feng-yue-piano>
- Email: [info@truongca.com](mailto:info@truongca.com)
- Youtube: [Youtube.com/@PianoTutorialSheetMusic](https://www.youtube.com/@PianoTutorialSheetMusic)
- Ask a sheet: <https://truongca.com/ask.php>

## \* Copyright Disclaimers - No Rights Reserved

☐☐ (Phong Nguyệt) (☐☐☐) And all of sheets music and PDF files were posted here to support you to practice singing perfectly. Sheets with notes and chords are for reference only, for non-commercial purposes only, not involved with earning money by buying and selling. Copyright is belong to song writer/author and copyright owner. Truongca.com do not own any copyrighted content.